

Excimer light Phototherapy device **TheraBeam® UV308 mini**

Specifications

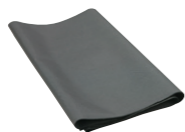
Product Name	TheraBeam UV308 mini
Wavelength	308nm
Irradiation Area	50mmx50mm (Approx.)
Rated Voltage	AC100-240V
Rated Frequency	50/60Hz
Dimensions	Controller : 225(H) x 240(W) x 275mm(D) (Approx.) Handpiece : 220(H) x 85(W) x 215mm(D) (Approx.)
Weight	Approx. 7kg
Temperature/Humidity Range	10°C~35°C, 10%~90%RH (no condensation)

Specifications and design may be improved or changed without notice.

Applications: Psoriasis, vitiligo vulgaris, atopic dermatitis, parapsoriasis, palmoplantar psoriasis, mycosis fungoides (syndrome), cutaneous T-cell lymphoma, pityriasis lichenoides chronica

Accessory

Light-Blocking Sheet: 1



Light-Blocking Glasses: 2



Irradiation attachments: 6



Lineup

Targeted phototherapy Excimer Light
TheraBeam® UV308

- Equipped with a new Excimer Filter (patent) which cuts unnecessary short wavelengths causing erythema.
- Targeted phototherapy prevents excessive irradiation of healthy skin areas and enables pinpoint irradiation on refractory.
- Large Irradiation Area 120mmx100mm (Approx.)



Excimer UV

Excimer light Phototherapy device

NEW

For all who need Excimer light phototherapy.
Lineup compact and handy type of TheraBeam® UV308

TheraBeam® UV308 mini

Targeted Excimer Light 【Compact/Handy type】



Excimer light Phototherapy device
TheraBeam® UV308 mini



:: Light/compact

Small-footprint design 225mm(H)x240mm(W)x275mm(D)
Portable device (1kg of lamp fitting, 6kg of main body)
No need for a place of installation

:: With an Excimer Filter*1 (jointly patented with Nagoya City University)

With the optical filter cuts the shorter wavelengths likely to cause erythema.

:: Attentive support by in-house development and in-house production

Ushio Inc. is an excimer light manufacturer.

① **Nearly instantaneous start-up (less than 10 seconds) and instant continuous lighting mean no time lags during treatment.**

② **Only press the switch button of the lamp fitting part for lighting.**



③ **1MED irradiation time: 12sec.**

Average 1MED (300mJ/cm²) for Japanese people with TheraBeam® UV308 mini at irradiation intensity 25mW/cm².

④ **MED measurement function is equipped with standards.**

1
Light Compact

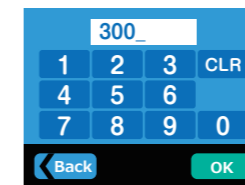


With a strap for anti-drop



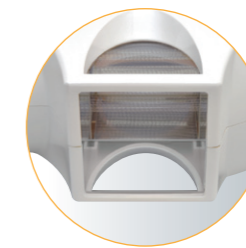
Please be sure to use a strap of an accessory.

2
Touch panel easy operation

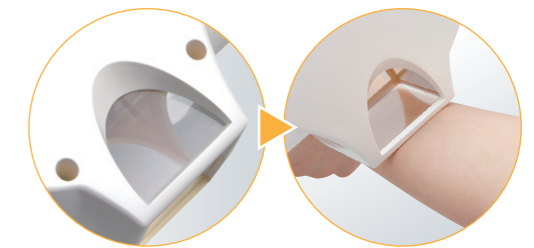


Easy entry by a numeric keypad

3
Appropriate irradiation to a small area



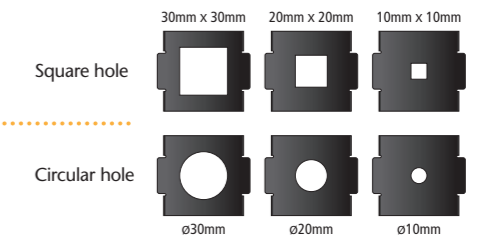
Light irradiation window size
50mmx50mm (Approx.)



Enable to irradiate an affected part correctly for seeing the irradiation location from side window.



6 types irradiation attachment



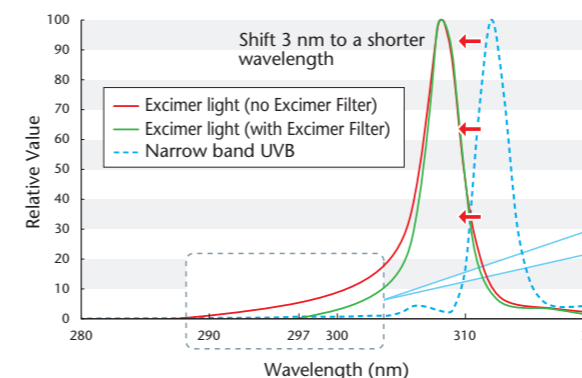
*1



The incorporated excimer filter (patented) was developed through extensive cellular experiments and clinical evaluation. This optical filter is included to cut the shorter wavelengths likely to cause erythema. We value the safety of the treating doctor and patients first.

Peak wavelength 308nm Excimer light

By shifting the wavelength peak by 3nm to the 308 nm side, better treatment effect would be expected.



Excimer Filter Compatibility of safety with efficacy

The new Excimer Filter cuts unnecessary short wavelengths.

